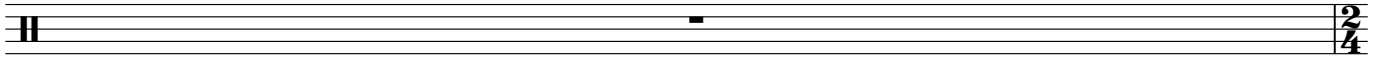


Temple Blocks

Obertura Ocal 2003



Temple Blocks Obertura Ocal 2003

Jose Manuel Jiménez Sánchez

♩ = 100

f *f* **3**

9 **A** **3**

15 **13** **3**

30 **B** **2** *mf* **2**

38 *mf*

43 **C** **2** **4** *mf* *p*

53

57 **D** **3**

65 *p*

68 *sfz*

Detailed description of the musical score: The score is for a single melodic line on a snare drum. It begins with a tempo of 100 beats per minute. The first line (measures 1-8) starts in 2/4, changes to 4/4, then 3/4, 6/8, 7/8, and ends in 4/4. Dynamics are *f*. Section A (measures 9-14) is in 4/4 with a triplet of eighth notes. Section B (measures 15-29) features complex rhythmic patterns with dynamics *mf*. Section C (measures 30-42) includes a triplet of eighth notes and a quarter note, with dynamics *mf* and *p*. Section D (measures 43-56) consists of rests in various time signatures (3/4, 7/8, 4/4, 7/8, 4/4). The final line (measures 57-68) includes a triplet of eighth notes and a dynamic *sfz*.

Temple Blocks

70 **E** *accel.*

83

88 **F** *A tempo* **G**

103 *p*

109 **H**

113 *p*

127 **I**

132 *f*

140 **J** *Allegro*

143 **K**